

QUICK START GUIDE

neo:Pro HDMI Extender Set (P8-HDBT2-P-EXSET)



SCAN FOR HELP

This installation guide helps you to install and use your Pulse-Eight neo:Pro HDMI Extender for the first time.
Go to help.pulse-eight.com for additional information on this product including important technical information not provided in this document and warranty terms & conditions.

CHECK WHAT'S INSIDE THE BOX

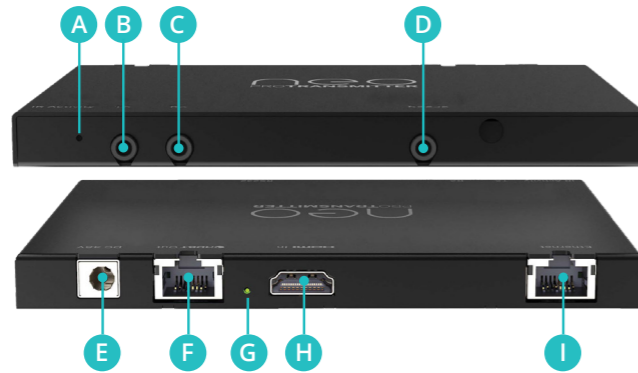
- 1 x neo:Pro PoH Receiver
- 1 x neo:Pro Transmitter
- 1 x IR Blaster Cable Pack
- 1 x Quick Start Guide
- 1 x Power Supply Adapter

⚠ IMPORTANT!

- Please read the instructions before attempting to install or operate this equipment.
- Visit the help.pulse-eight.com to download the latest product manual, additional documentation, and configuration tools.

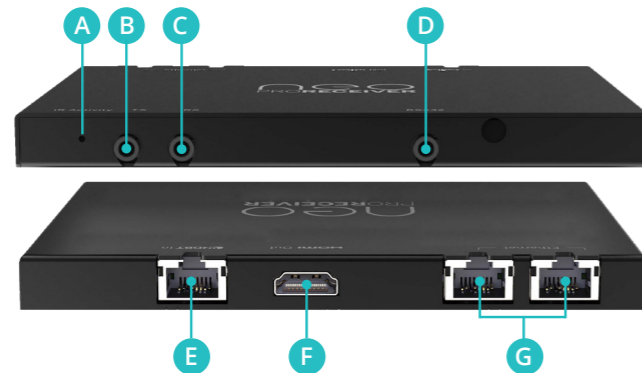
PANEL DESCRIPTIONS

neo:Pro Transmitter



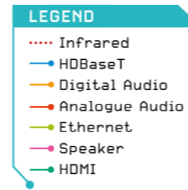
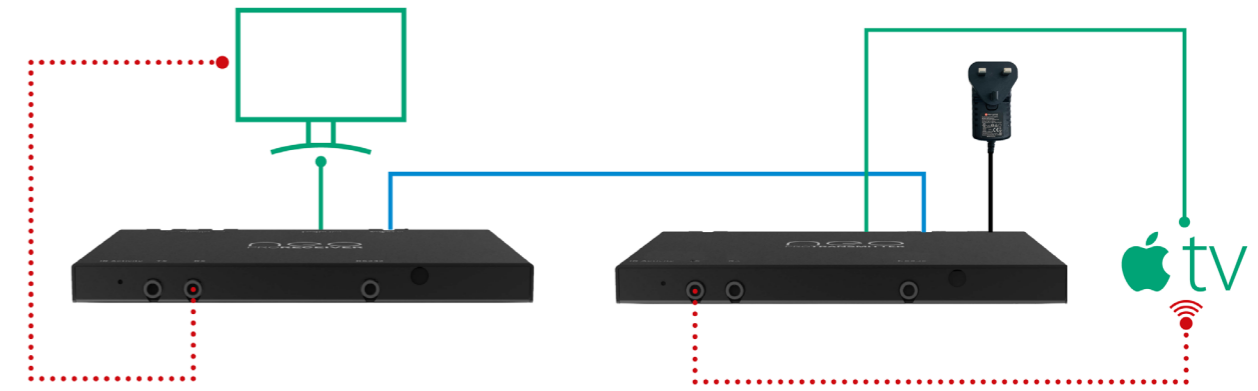
- A IR Activity Indicator** - The LED will flash green when an IR signal is being received and red when an IR signal is being transmitted.
- B IR Flasher (TX)** - The IR Flasher port is used to control the connected HDMI Source device (eg: Blu-ray) using the IR transmitter.
- C IR Receiver (RX)** - The IR Receiver port can be used to distribute IR signals to the attached neo:Pro receiver, when connecting an IR Receiver.
- D RS232 Jack Port** - Connect via male jack adapter for RS232 passthrough over the HDBaseT line.
- E 48 V Power Input** - is used with the supplied 48V power adapter
- F HDBaseT Output** - Connect the appropriate category cable (Cat 5e or higher recommended) to the output of the transmitter; this cable should then be connected to the HDBaseT input on the neo:Pro receiver. The LEDs will illuminate to indicate a link is established (amber LED) and video (green LED) is being sent.
- G PoE Indicator** - The LED will illuminate (green) when the Transmitter is providing power-over-HDBaset (PoH) to the receiver
- H HDMI Input** - Connect the appropriate high speed HDMI cable to this port and connect to the source device. (Blu-Ray player etc.).
- I Ethernet** - Optional connections for using ethernet passthrough.

neo:Pro Receiver



- A IR Activity Indicator** - The LED will flash green when an IR signal is being received and red when an IR signal is being transmitted.
- B IR Flasher (TX)** - The IR Flasher port is used to control the connected HDMI Sink device (TV) using the IR transmitter.
- C IR Receiver (RX)** - The IR Receiver port can be used to distribute IR signals back to the attached neo:Pro transmitter, when connecting an IR Receiver.
- D RS232 Jack Port** - Connect via male jack adapter for RS232 passthrough over the HDBaseT line.
- E HDBaseT Input** - Connect the appropriate category cable (Cat 5e or higher recommended) to the input of the receiver; this cable should also be connected to the HDBaseT output on the neo:Pro transmitter. The LEDs will illuminate to indicate a link (amber LED) and power (green LED) is being received.
- F HDMI Output** - Connect the appropriate high speed HDMI cable to this port and connect to the sink device.
- G Ethernet** - Optional connections for using ethernet passthrough.

INSTALLATION



1. Connect HDMI cable from your video source (e.g. Blu-Ray player) to the HDMI input of the neo:Pro transmitter.
2. Connect the appropriate category cable (Cat 5e or higher recommended) to the neo:Pro Transmitter's 'HDBaseT Out' ports.
3. Complete the connection by attaching the other end of the Cat cable to the neo:Pro Receiver's 'HDBaseT In' port
4. Connect HDMI Out on the neo:Pro Receiver to the sink device (i.e. TV) using a high-speed HDMI cable.
5. If required, connect the compatible IR Flasher (Emitter/Transmitter) cable to the 'TX' port on the neo:Pro Transmitter and the IR bud placed over the source device's IR window.
6. If required, connect the IR Receiver to the neo:Pro Receiver's 'RX' port - and place the IR bud on the underside of the sink device (i.e. TV).
7. Insert the supplied power adapter to the neo:Pro Transmitter and plug it into the AC mains.
8. Turn ON the AC mains.
9. As it powers ON, check the LED status on the attached neo Receiver to ensure correct installation and connection. See LED Status in Troubleshooting section.

Note: The Green LED of the HDBaseT port (RJ45) on the neo Receiver should illuminate when there is video to the device.

SAFETY PRECAUTION

Please read the full manual instructions before attempting to install or operate this equipment.

Please keep the following in mind as you unpack and install this equipment:

- Always follow basic safety precautions to reduce the risk of fire, electrical shock, and injury.
- To prevent fire or shock hazards, do not expose the unit to rain, or moisture or install this product near water.
- Never spill liquid of any kind on or into this product.
- Where possible, install the extender towards the top of the rack to avoid the unit overheating.
- Only use the supplied IEC cable.
- Never push any objects into this product through any openings or empty slots in the unit as you may damage parts inside and/or cause an electrical shock.
- Do not allow anything to rest on the power cabling and avoid putting the weight of any kind on it.
- To protect the unit from overheating do not block any vents or openings in the unit housing that provides ventilation. Allow sufficient space for air to circulate around the unit.
- This product is intended for use in a clean (dust-free) residential environment.

FCC Warning

This equipment has been tested and found to comply with the limits for a Class B digital device, pursuant to part 15 of the FCC Rules. These limits are designed to provide reasonable protection against harmful interference in a residential installation. This equipment generates, uses and can radiate radio frequency energy and, if not installed and used in accordance with the instructions, may cause harmful interference to radio communications. However, there is no guarantee that interference will not occur in a particular installation. If this equipment does cause harmful interference to radio or television reception, which can be determined by turning the equipment off and on, the user is encouraged to try to correct the interference by one or more of the following measures:

- Reorient or relocate the receiving antenna.
- Increase the separation between the equipment and receiver.
- Connect the equipment into an outlet on a circuit different from that to which the receiver is connected.
- Consult the dealer or an experienced radio/TV technician for help.

COPYRIGHT NOTICE

No part of this document may be reproduced, transmitted, transcribed, stored in a retrieval system, or any of its part translated into any language or computer file, in any form or by any means (electronic, mechanical, magnetic, optical, chemical, manual, or otherwise) without express written permission and consent from the manufacturer.

© Copyright 2023. All Rights Reserved. Version 2.0 - June 2023